

Annual Report for 2009



**Kitsap Community
Food Co-op**

We're locally grown

Letter from the Co-op Board President

Dear Cooperators,

I am so pleased to present you with our first annual report, after just two years of organizing our effort. Since the 1920s, cooperatives in the United States have been built by community members to fill a common need, and our cooperative is no different. Kitsap County is a diverse community of 250,000 and only an hour from downtown Seattle, yet to date we still have no full-service grocery stores which are able to sell quantities of locally produced food from Kitsap and neighboring counties. We hope the Kitsap Community Food Co-op will be able to do just that. Our greatest hope is that this annual report will help instill the confidence in those who read it to become members of our growing cooperative, because without members, we will not have a store. In fact, we already feel like owners of a thriving community store, and we'd like to invite you to become owners with us today.

We also can't help but feel proud of where we've come in just two years. Beginning in January 2008 with a group of ordinary folks with little to no business experience, we've educated ourselves, brought in new board members, and taken our commitment to this store seriously by working hard for it, week in and week out. After all, we're representing you now – our fellow owners – and we want to make you proud of what we can do with your investment. Together, we can build a business that will make substantial change in our community by providing access to quality food, jobs, and a way to meet each other every day. And isn't that what it's all about?

Cooperatively,

Laura Moynihan



Our Mission:

The Kitsap Community Food Co-op is working to build a consumer-owned cooperative grocery store. Our mission is to connect our local community with quality food, products and access to information that promotes a healthy future for our families and our planet. Together, we strive to work toward a world where mutually beneficial relationships exist between producers and purchasers.

The Year Past...

January 24 – Winter Warm Up, a potluck event the board organizes to celebrate the hard work of our volunteers.

February 21 – We held our third public meeting at Seaside Church in Bremerton.

March 1 – Seeding Potluck to continue the grass roots growth of the co-op.

March 13 – FUNdraiser Event at at Monica's Waterfront Bakery & Cafe in Silverdale.

March 20 – Steering Committee members and interested volunteers attended a training on Formal Consensus with CT Butler.

July 14 – We officially incorporated and converted from a Steering Committee to a Board of Directors.

June 8-11 – Two board members attended CCMA in Pittsburgh, PA a conference for food co-ops.

July 1st – FUNdraiser Event on Wednesday at Hi-Lo's 15th Street Cafe in Bremerton.

July 31st – Co-op Film Fundraiser: Food, Inc. at the Port Orchard Bay Theater.

September 14th – Fourth Public Meeting at Seaside Church in Bremerton. Memberships first become available.

October 3rd – Fall Fair 2009 at Rodstol Lane Farm. Vendors sold everything from live chickens (really!) to hand knit baby hats to locally grown vegetables and locally made foods like chocolate and fruit bars.

October 22nd – Strategic Planning meeting for 2010.

The Kitsap Community Food Co-op Vision Statement

Food:

We sell the highest quality food at a fair market price.

Local:

We provide local food and products.

Community:

We are committed to building strong ties within our community.

Education:

We educate ourselves and the public.

Welcoming:

We provide a welcoming environment to everyone.

Ownership:

Members are more than just customers, members are owners.

Volunteerism:

We encourage members to help out and give back.

Dynamic:

We listen to our community, and work to meet their needs.

Ecological:

We commit to sustainable practices.

In 2009, the Kitsap Community Food Co-op entered into year **2** of this grassroots effort. Volunteers set up at **3** Farmers Markets and staffed information booths at **30** community events. The Board met **19** times and the **5** subcommittees met a total of **40** times. We had about **10** articles in local newspapers that mentioned or featured the Co-op. We held **2** public meetings and estimate at least **100** people attended each one. In September we welcomed our first **48** member-owners! At the Fall Fair we far surpassed our previous year with an amazing **700** people in attendance. Our committees offered **2** trainings, and our volunteers and board participated in **6** workshops, webinars and trainings, including **1** conference for food co-ops.

Our Committees Report...

Events (*Cynthia Mora, Liaison*) If you have seen the Kitsap Community Food Co-op represented at three of our county's Farmers Markets, local fairs, restaurants and the movies, then you have witnessed the hard and fun work of the Events Committee. We meet monthly to brainstorm on how we can get exposure for the cause and how we can educate the public about the importance of eating well and supporting our community. Working together for our most exciting event yet, Opening Day!

Membership (*Kristina Kruzan, Liaison*) The Membership Committee is essentially responsible for recruiting new member-owners. In 2009 our efforts largely went to researching and developing a membership structure that would reflect the needs of our community while meeting the needs of our store. We welcomed our first memberships in the last quarter of the year and are looking to keeping incoming memberships at a steady pace in 2010.

Site Selection (*Meg Simans, Liaison*) Committee accomplishments for 2009: Toured 6 possible building sites in Bremerton, Silverdale, and Port Orchard. Solidified a strong committee of 6 responsible members dedicated to the vision of a Kitsap Food Co-op. Established a relationship with local architect, Steve Rice, who will guide us in the early stages of building and site feasibility study.

Tap in! Stay in touch with
the Kitsap Community Food Co-op effort;
We make it easy, you can do it several ways.

- Visit our website – www.kitsapfoodcoop.org
- While you're there, sign up for our mailing list and get monthly updates from the board on our progress
- Search for Kitsap Community Food Co-op on Facebook and become a Fan.
- Find us on Twitter – kitsapfoodcoop
- Send us snail mail - PO Box 662, Silverdale WA 98383
or give us a call at 360-813-1301

Where We Stand

We have 71 members

We started with \$0 in the bank

Our income this year was \$18,451

Our expenses were \$2,341

Our balance in December was \$16,110

How The Kitsap Community Food Co-op came to be...

About five years ago, a group formed in Bremerton to discuss starting a food co-op. There was a lot of passion, but they decided the group did not have the energy to start a food co-op just yet. (Future Co-op Steering Committee member Carolee Valentine was among that group.)

In September 2007, Laura and Greg Moynihan had just relocated to Bremerton from Northern California with the hope of starting a family someplace where Laura could be a stay-at-home mom. A novice gardener, she began volunteering for the Bremerton Urban Garden Society (B.U.G.S.) where she met Carolee. A few months later, the idea struck her that what Kitsap County really needed – and what she was passionate about – was starting a food co-op. Carolee helped her get in touch with those original folks, those people contacted other people... and a movement was born. January 28, 2008, the first Steering Committee was formed. Current Board Vice President Kristina Krusan joined the co-op at their second meeting in Feb. 2008, and current board member Cynthia Mora joined us in our third month, April 2008.

Today, The Kitsap Community Food Co-op has five standing committees, approximately 50 regular volunteers, an opt-in mailing list of over 1,000 community members, and 70 member-owners.



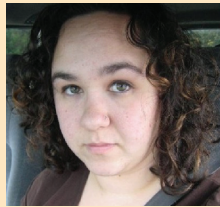
Our Board



Laura Moynihan, President, is a former high school teacher and graphic designer who lives in West Bremerton, where she has resided for two years with her husband Greg, her new baby Alastair, and a collection of cats.

She has been helping the co-op since its inception, and has been a member-owner since Sept. 2009. Her reason for wanting a co-op in Kitsap County: "To connect with my community, and to get easy access to all the great food produced and grown right here."

Kristina Kruzan, Vice-president and Membership Committee Liaison, is a doula and childbirth educator living in Lake Symington with her husband and their three children. Kristina is one of the original co-op organizers; she joined the effort despite never having shopped at a co-op, simply wanting something to connect her children with their community in a meaningful way.



Meg Simans, Site Selection Committee Liaison, is a Bremerton chiropractor who advocates nutrition and healthy lifestyle in the office and at home with her husband and two teenage sons. She believes that there is nothing more deserving of our time and attention than our health. Food is medicine and prevention of illness and disease is largely possible by eating fresh, whole, nutritious foods every day.

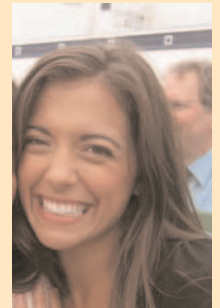
She is a member of PCC Natural Markets in King County and looks forward to opening day of the Kitsap Community Food Co-op.



Cynthia Mora, Events Committee Liaison. Cynthia, otherwise known as "Farmer Rosie," lives in Southworth, where she has resided for four years, and nine years in Port Orchard. She lives with her husband of 31 years Tony. They have three children, six grandchildren, chickens, sheep, three dogs, two cats, and a llama. She has been helping the co-op since April 2008 on the Fundraising Committee (now retitled "Events"), and has been a member-owner since Sept. 2009. Her reason for wanting a co-op in Kitsap County: "Real food."

She has been helping the co-op since April 2008 on the Fundraising Committee (now retitled "Events"), and has been a member-owner since Sept. 2009. Her reason for wanting a co-op in Kitsap County: "Real food."

Marit Bockelie, is our youngest Board Member, and was born and raised in Kitsap County. Her professional experience includes work as a land use planner, and a letterpress printer. She has been helping the co-op since Sept. 2009, when she joined as a member-owner. Her reason for wanting a co-op in Kitsap County: "It is a basic right of all people to have fresh and healthy food, especially children."



Bruce Smith, Public Relations Committee Liaison, has lived in Port Orchard for 9 years with his wife Yoshiko and their two children. He and his wife have a small business letterpress printing note cards and block prints. He has been actively helping the co-op since our last public meeting in Sept. 2009,

where he also became a member. "It's all about having a healthier, happier, vibrant community," he says.

The Kitsap Community Food Co-op Board of Directors contains a maximum of seven Directors, and functions as the entity that is legally responsible for all business and financial decisions of the co-op and its committees, with all committees reporting to the Board. Elections occur every year in February for expiring terms, which last three years. Only Members may apply to be on the Board or attend a Board meeting.

The Kitsap Community
Food Co-op

www.kitsapfoodcoop.org

360-813-1301

info@kitsapfoodcoop.org

PO Box 662,
Silverdale WA 98383

Photo by Laura Moynihan:
The Food Co-op, Port Townsend, WA.

SPECIAL

washington
Braeburn Apple

superbly sweet and tart eating apple aromatic,
crisp and juicy

\$1.19 lb

094101

certified organic